

DTV-VLD

VANDAL RESISTANT HIGH RES DAY/NIGHT VARI FOCAL EXTERNAL DOME

Image Sensor	1/3" Sony Super HAD CCD
Resolution	540 TVL
Sensitivity (LUX)	0.3 Lux @ F1.2 Colour 0.002 Lux (Sense Up)
Electronic Shutter	1/50 - 1/120,000
Lens	2.8-11mm Direct Drive
BLC	Low/Middle/High/Off selectable
Mounting	Ceiling or Wall with 3 axis gimble
Features	OSD, Motion Detection, Privacy Function DNR (Digital Noise Reduction)
Enclosure Rating	IP66
Power requirements	12V DC, 210 mA
Dimensions (mm) (WxH)	145 x 100



Standard camera



High end colour/mono



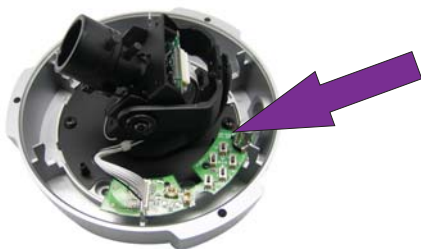
Our VLD dome

The above images were taken at midnight with the light measurement of 0.03 Lux

The bushes to the top right of the scene could hardly be seen with the naked eye

The VLD dome has rapidly become our best selling camera for obvious reasons

On screen display enables access to the following features



- .Sense-Up (12 levels upto 128x)
- .Adjustable back light compensation
- .Adjustable white balance
- .Digital Noise Reduction for noise reduction and disk saving
- .Privacy Masking - 4 programmable zones
- .Mirror function - horizontal image inversion
- .Motion Detection
- .Automatic Gain Control
- .Camera ID
- .Sharpness control



Cable managed wall bracket also available